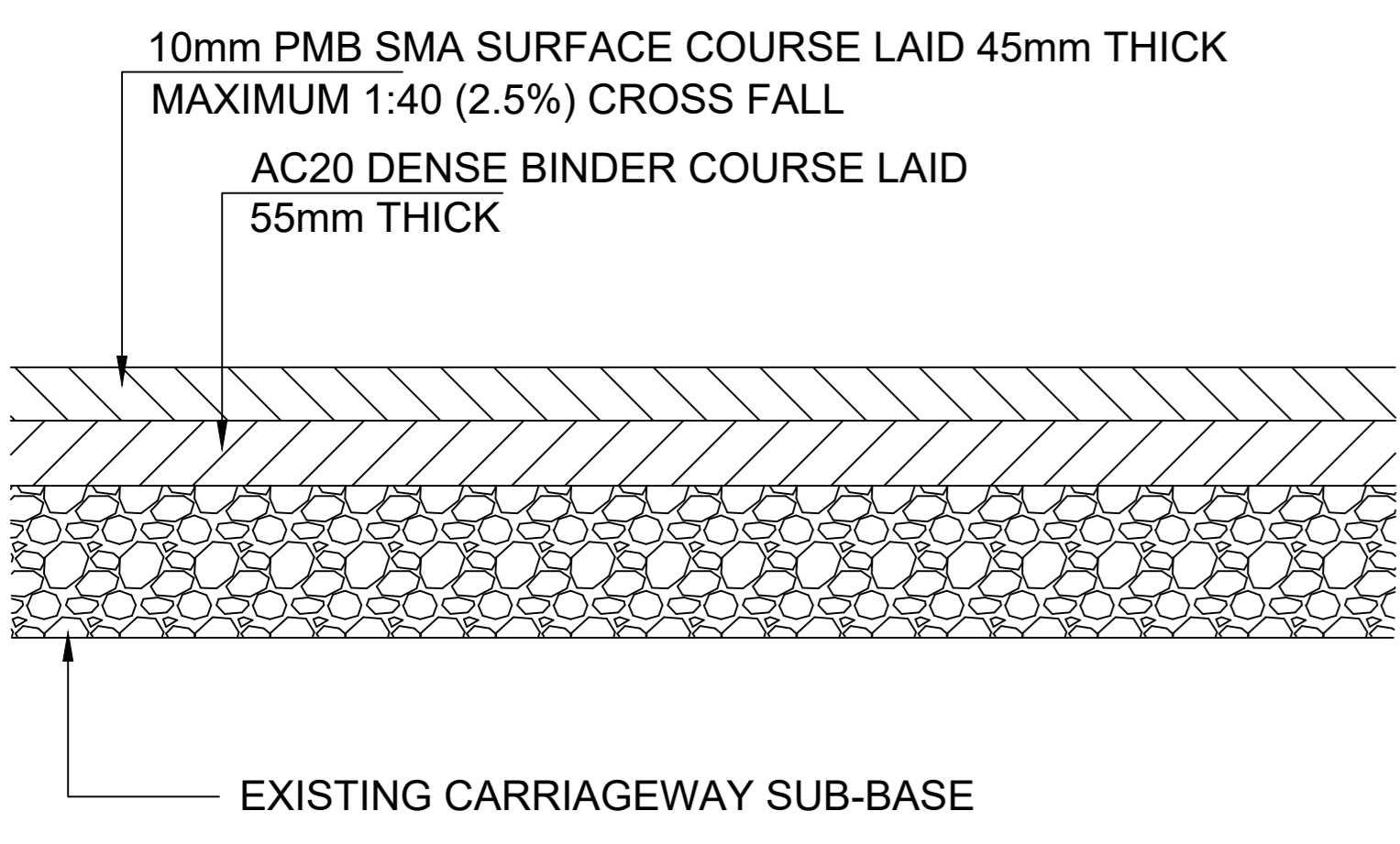


- LEGEND**
- PROPOSED CARRIAGEWAY RESURFACING - EXCAVATE AND DISPOSE EXISTING SURFACE TO A MAXIMUM DEPTH OF 100mm. APPLY BOND COAT, LAY A 55mm DEEP LAYER OF AC20 BINDER COURSE, APPLY BOND COAT AND LAY A 45mm DEEP LAYER OF SMA SURFACE COURSE. CARRIAGEWAY LEVEL MAY BE RAISED IN PLACES TO AID DRAINAGE. EXCAVATION/DISPOSAL OF MATERIAL TO BE KEPT TO A MINIMUM.
 - EXISTING VERGE/SHRUBS/TREES TO BE RETAINED.
 - PROPOSED F1 ASPHALT FOOTWAY SURFACE - K1 KERBING TO BE INSTALLED WITH 100MM UPSTAND AND E1 REAR EDGING. K5 & K3/1 DROPPED KERB CROSSING POINTS TO BE PROVIDED WHERE INDICATED ON SITE.



LOCATION PLAN



TYPICAL RESURFACING DETAIL

REV	AMENDMENTS	BY	APP'VD	DATE

8 No. MOTORCYCLE SPACES 3m LONG. 2m MINIMUM BETWEEN SPACES. WIDTH BETWEEN SPACES TO BE 1.5m

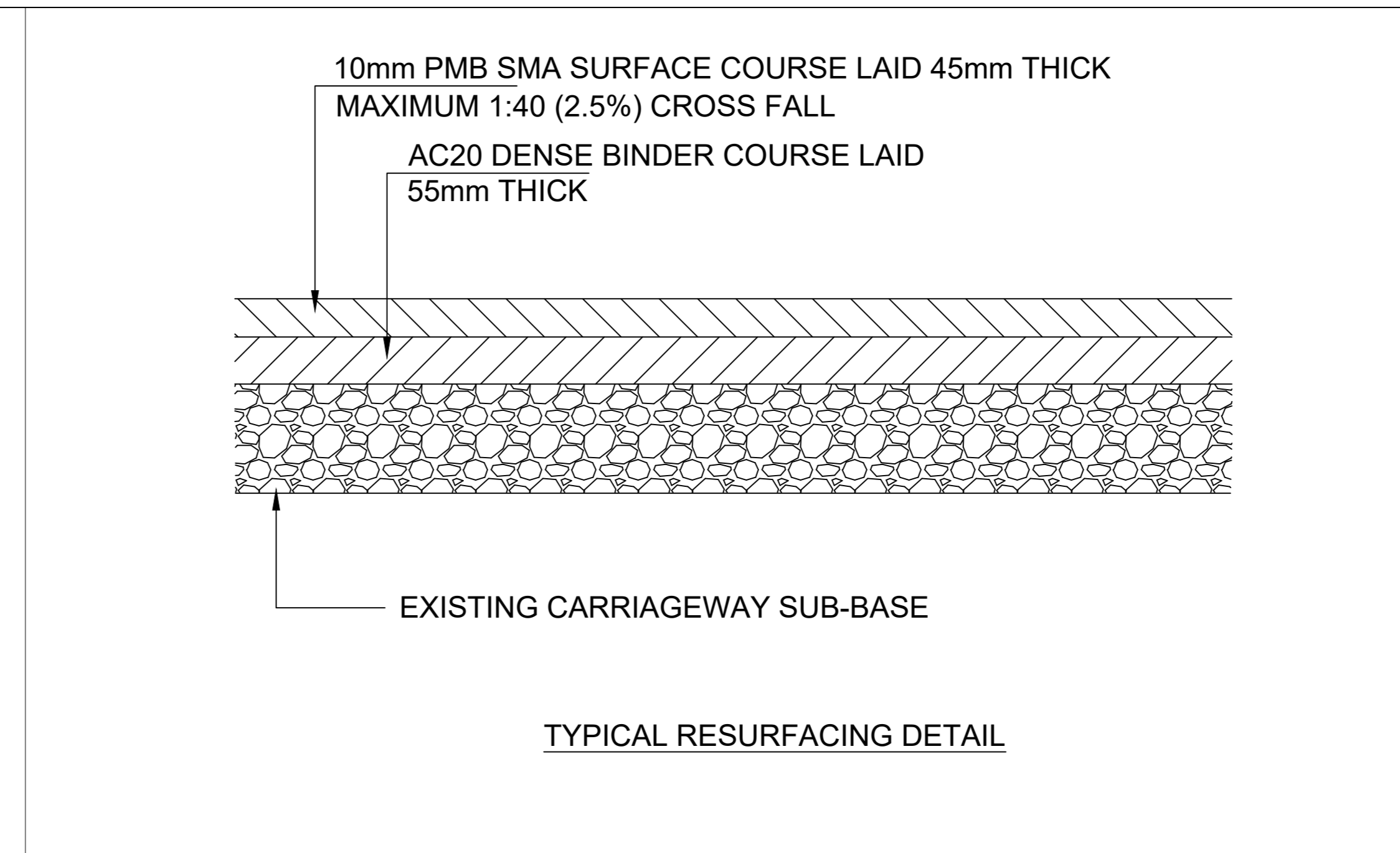
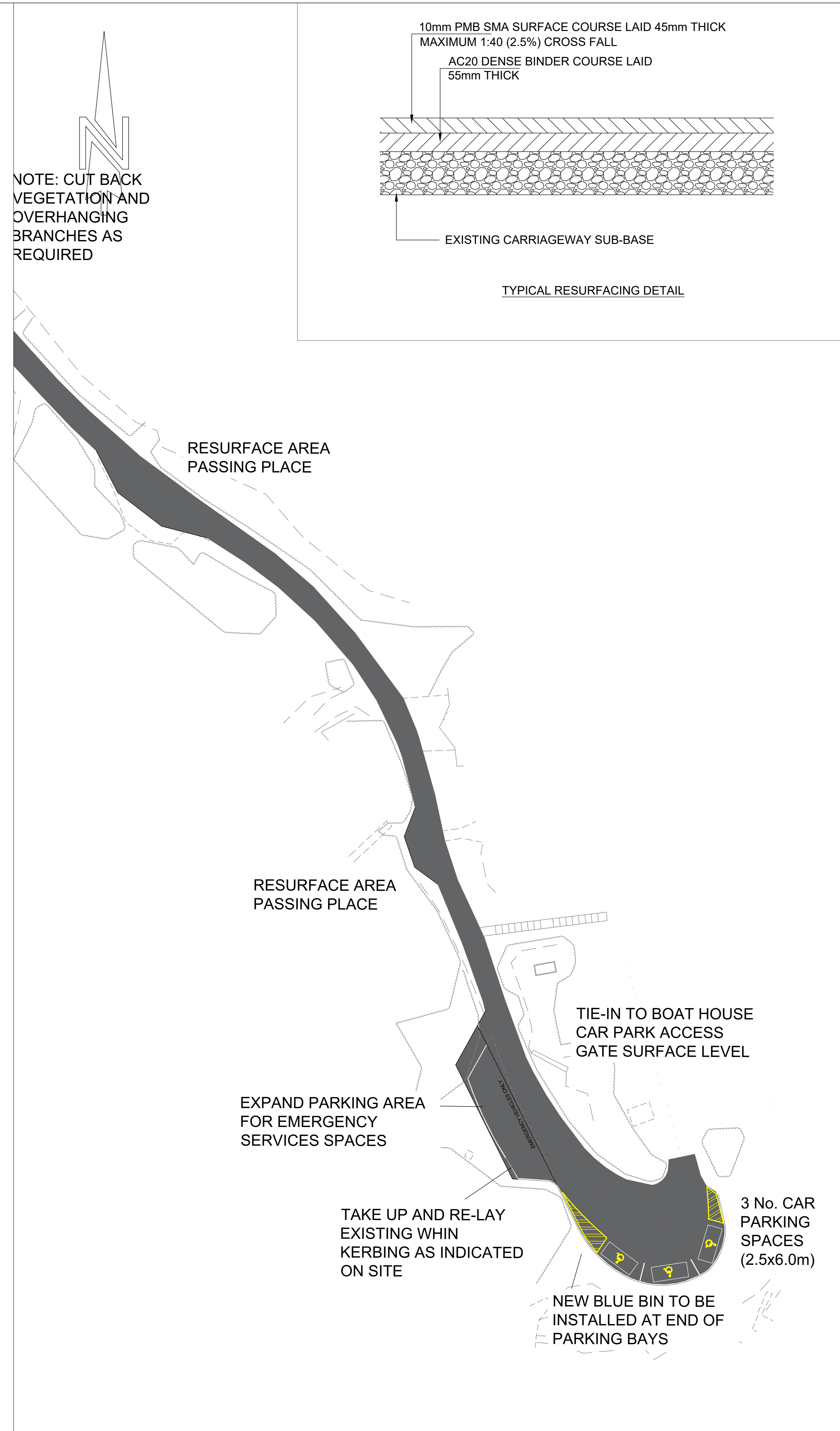
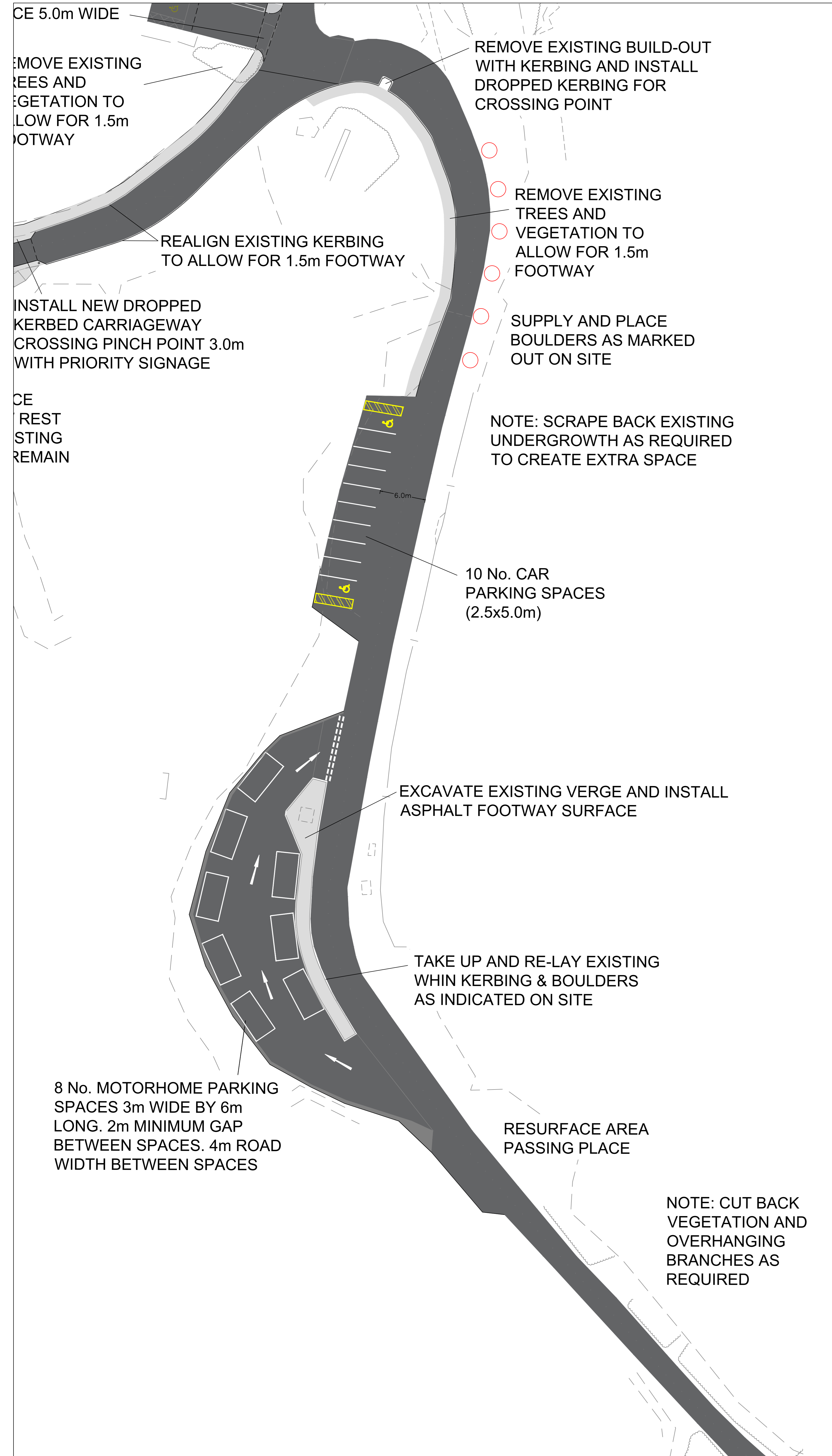


ROADS AND TRANSPORTATION SERVICES

HEAD OF SERVICE - JOHN MITCHELL

TITLE: ABERDOUR SILVER SANDS CAR PARK GENERAL ARRANGEMENT SHEET 1: MAIN CAR PARK & ACCESS ROAD

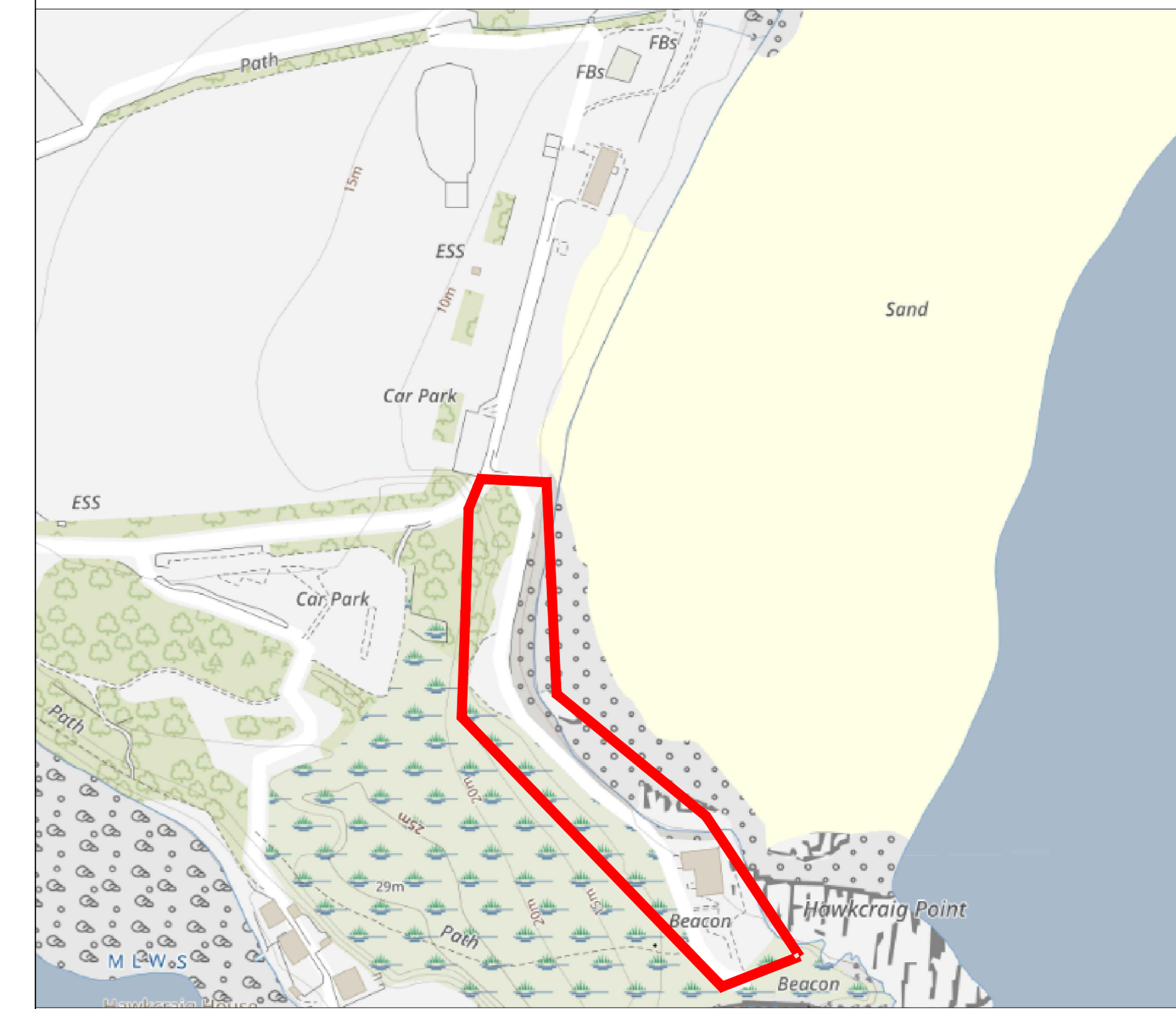
DRAFT		TENDER	X	CONSTRUCTION		AS BUILT	
DESIGNED	PS	DRAWN	PS	CHECKED	MM	APPROVED	MM
DATE	19/09/25	SCALE:	NOT TO SCALE	DRAWING No.	P60736-001		



LEGEND

PROPOSED CARRIAGEWAY RESURFACING - EXCAVATE AND DISPOSE EXISTING SURFACE TO A MAXIMUM DEPTH OF 100mm. APPLY BOND COAT, LAY A 55mm DEEP LAYER OF AC20 BINDER COURSE, APPLY BOND COAT AND LAY A 45mm DEEP LAYER OF SMA SURFACE COURSE. CARRIAGEWAY LEVEL MAY BE RAISED IN PLACES TO AID DRAINAGE. EXCAVATION/DISPOSAL OF MATERIAL TO BE KEPT TO A MINIMUM.

PROPOSED F1 ASPHALT FOOTWAY SURFACE - E1 EDGING.



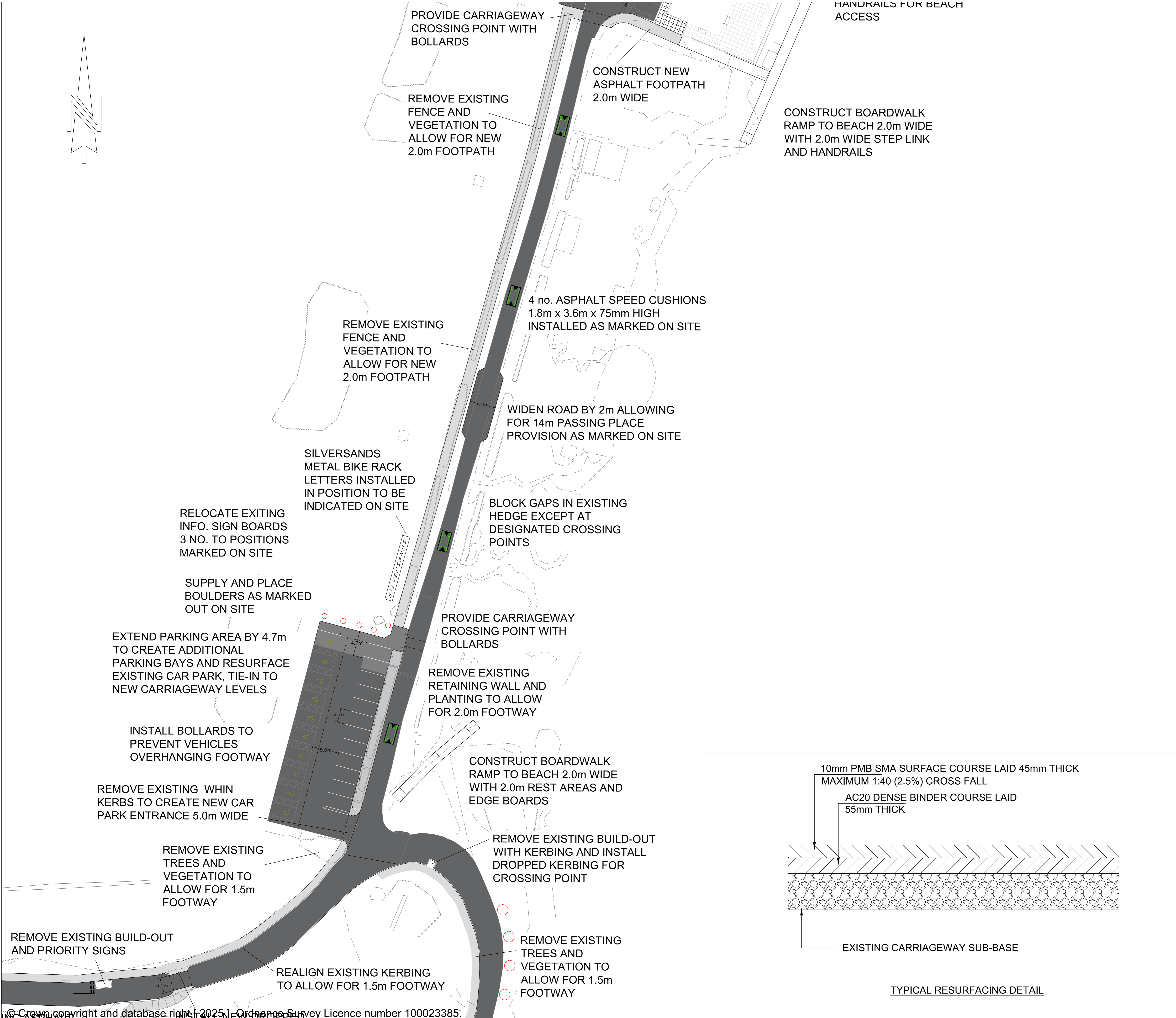
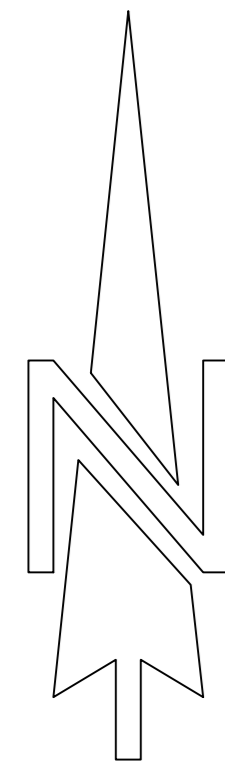
LOCATION PLAN

REV	AMENDMENTS	BY	APP'VD	DATE

Fife COUNCIL ROADS AND TRANSPORTATION SERVICES
HEAD OF SERVICE - JOHN MITCHELL

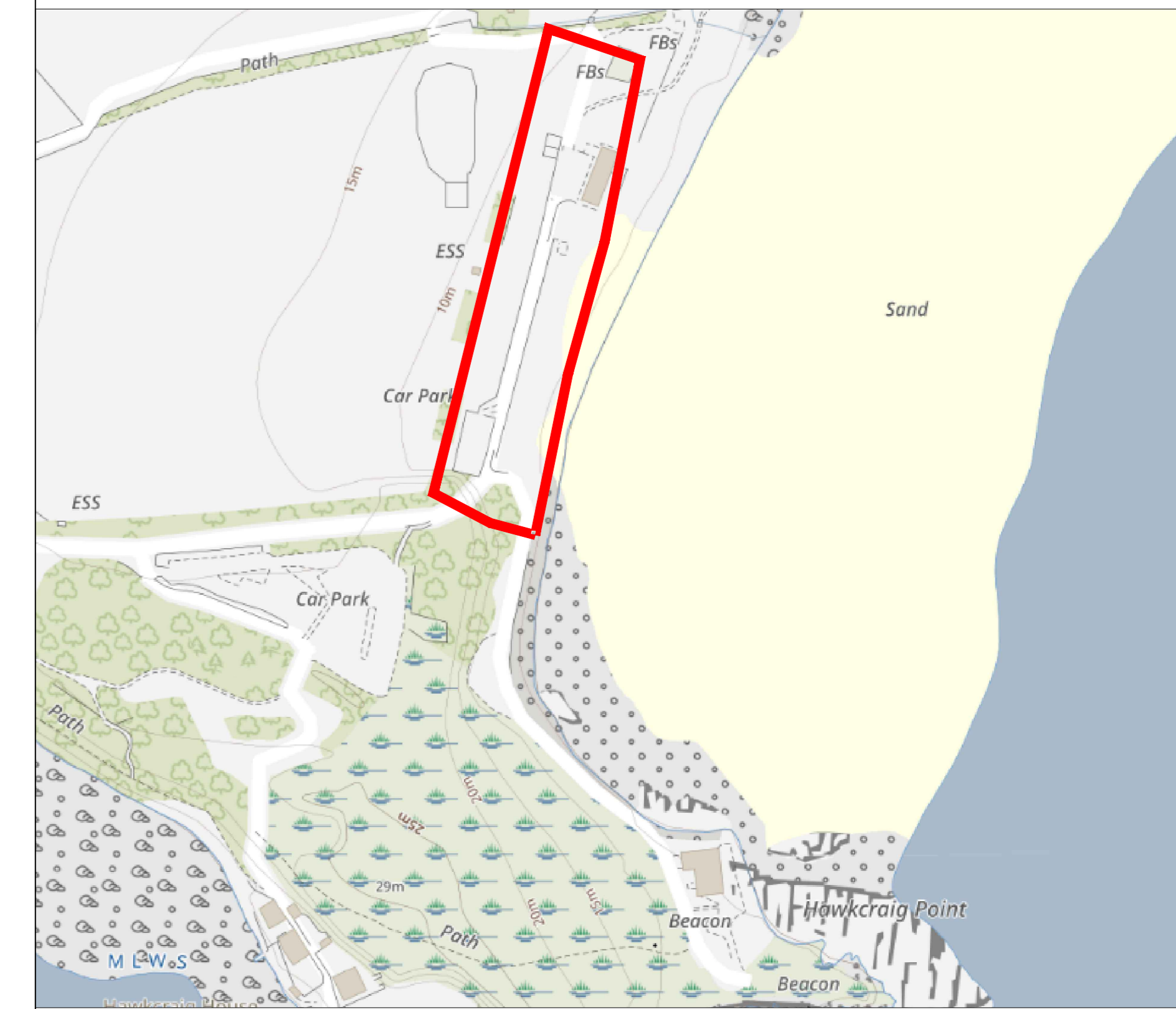
TITLE: ABERDOUR SILVER SANDS CAR PARK GENERAL ARRANGEMENT SHEET 2: ROAD TO LIGHTHOUSE

DRAFT		TENDER	X	CONSTRUCTION		AS BUILT	
DESIGNED	PS	DRAWN	PS	CHECKED	MM	APPROVED	MM
DATE	19/09/25	SCALE:	NOT TO SCALE	DRAWING No.	P60736-002		

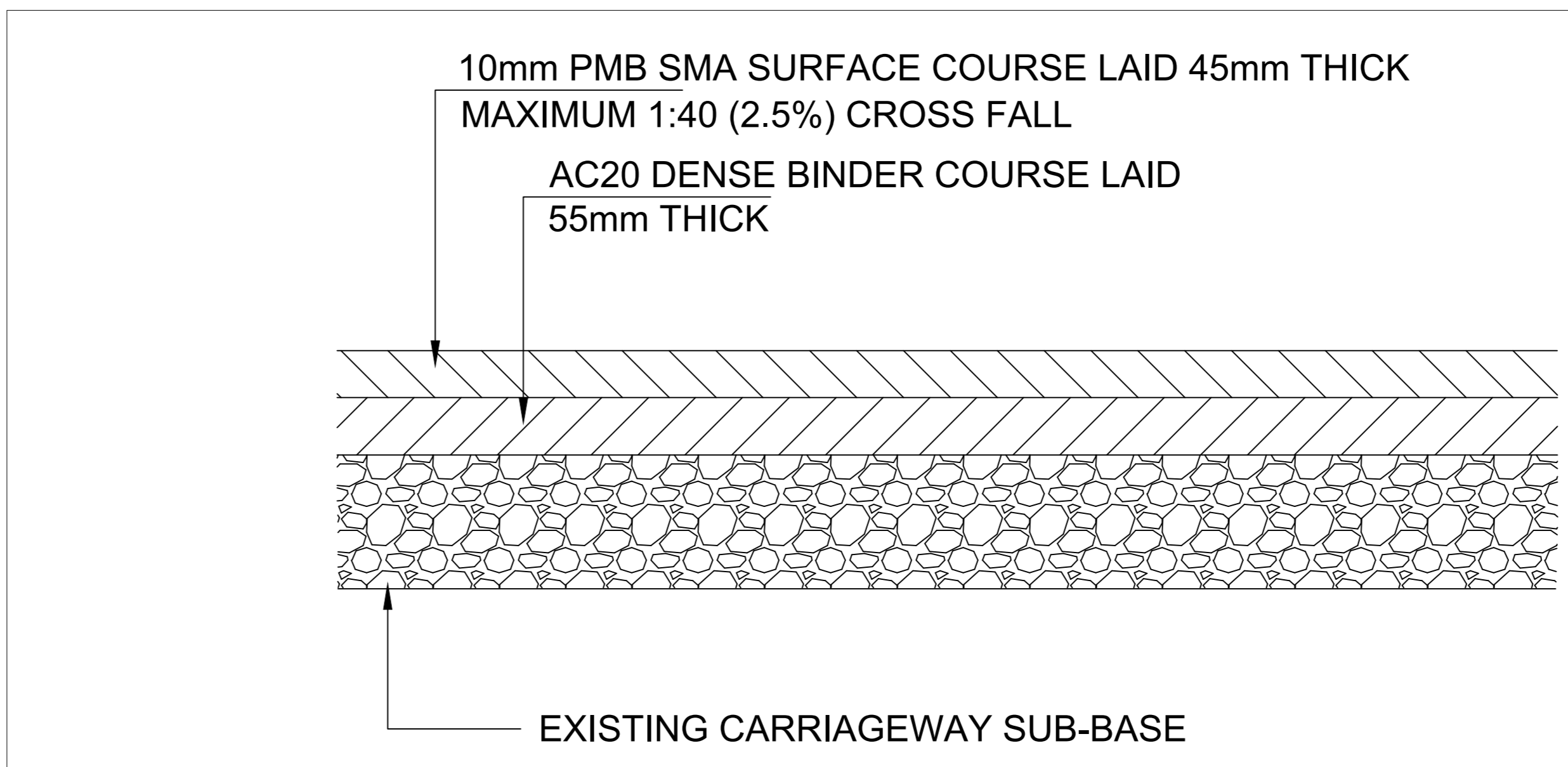


LEGEND

- PROPOSED CARRIAGEWAY RESURFACING - EXCAVATE AND DISPOSE EXISTING SURFACE TO A MAXIMUM DEPTH OF 100mm. APPLY BOND COAT, LAY A 55mm DEEP LAYER OF AC20 BINDER COURSE, APPLY BOND COAT AND LAY A 45mm DEEP LAYER OF SMA SURFACE COURSE. CARRIAGEWAY LEVEL MAY BE RAISED IN PLACES TO AID DRAINAGE. EXCAVATION/DISPOSAL OF MATERIAL TO BE KEPT TO A MINIMUM.
- PROPOSED F1 ASPHALT FOOTWAY SURFACE - E1 EDGING.



LOCATION PLAN



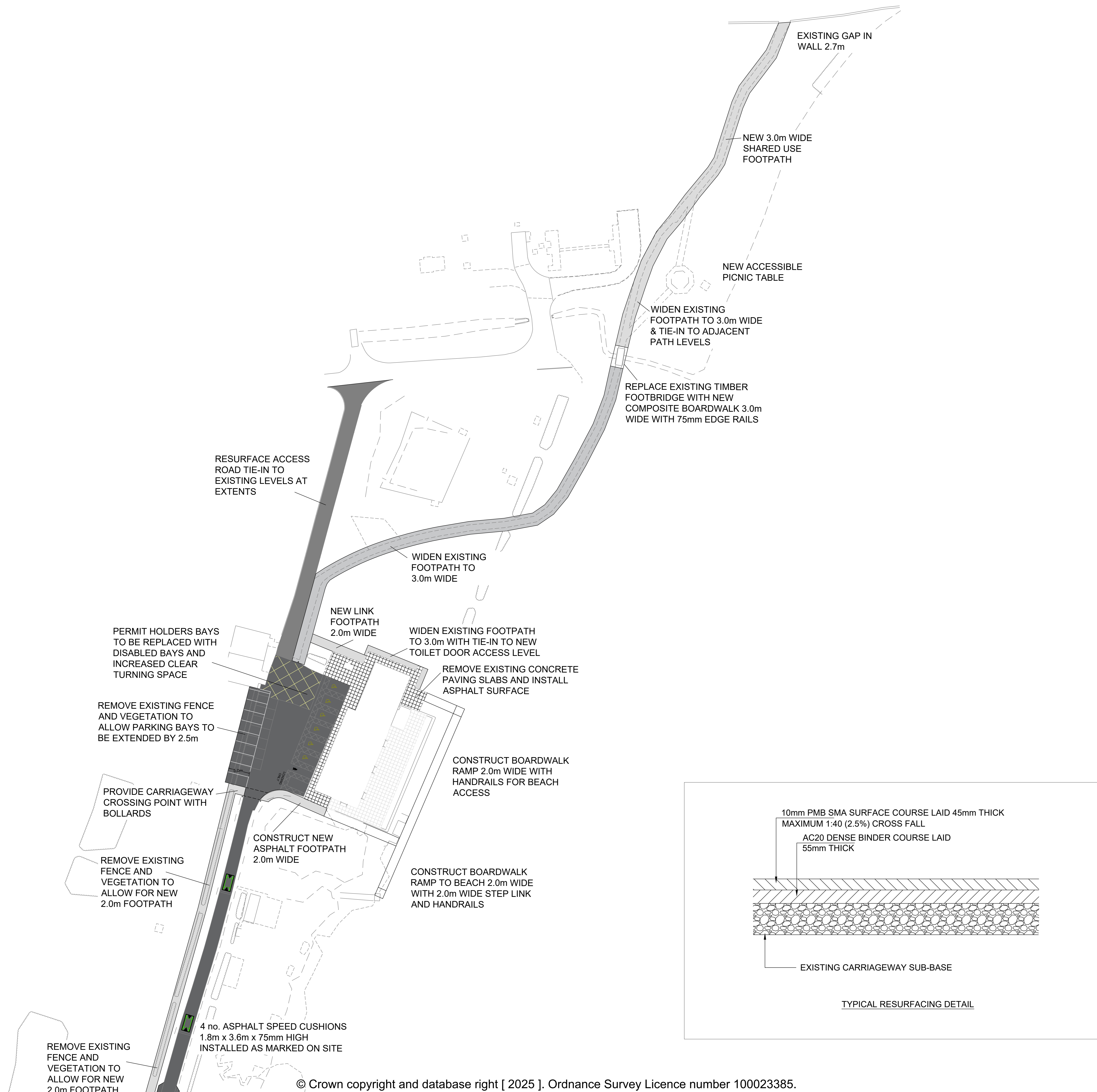
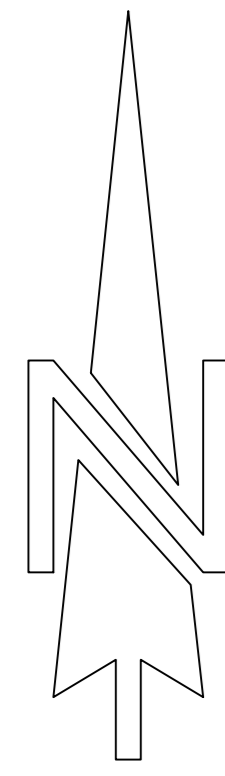
TYPICAL RESURFACING DETAIL

REV	AMENDMENTS	BY	APP'VD	DATE

Fife COUNCIL ROADS AND TRANSPORTATION SERVICES
 HEAD OF SERVICE - JOHN MITCHELL

TITLE: ABERDOUR SILVER SANDS CAR PARK
 GENERAL ARRANGEMENT
 SHEET 3: ROAD TO CAFE

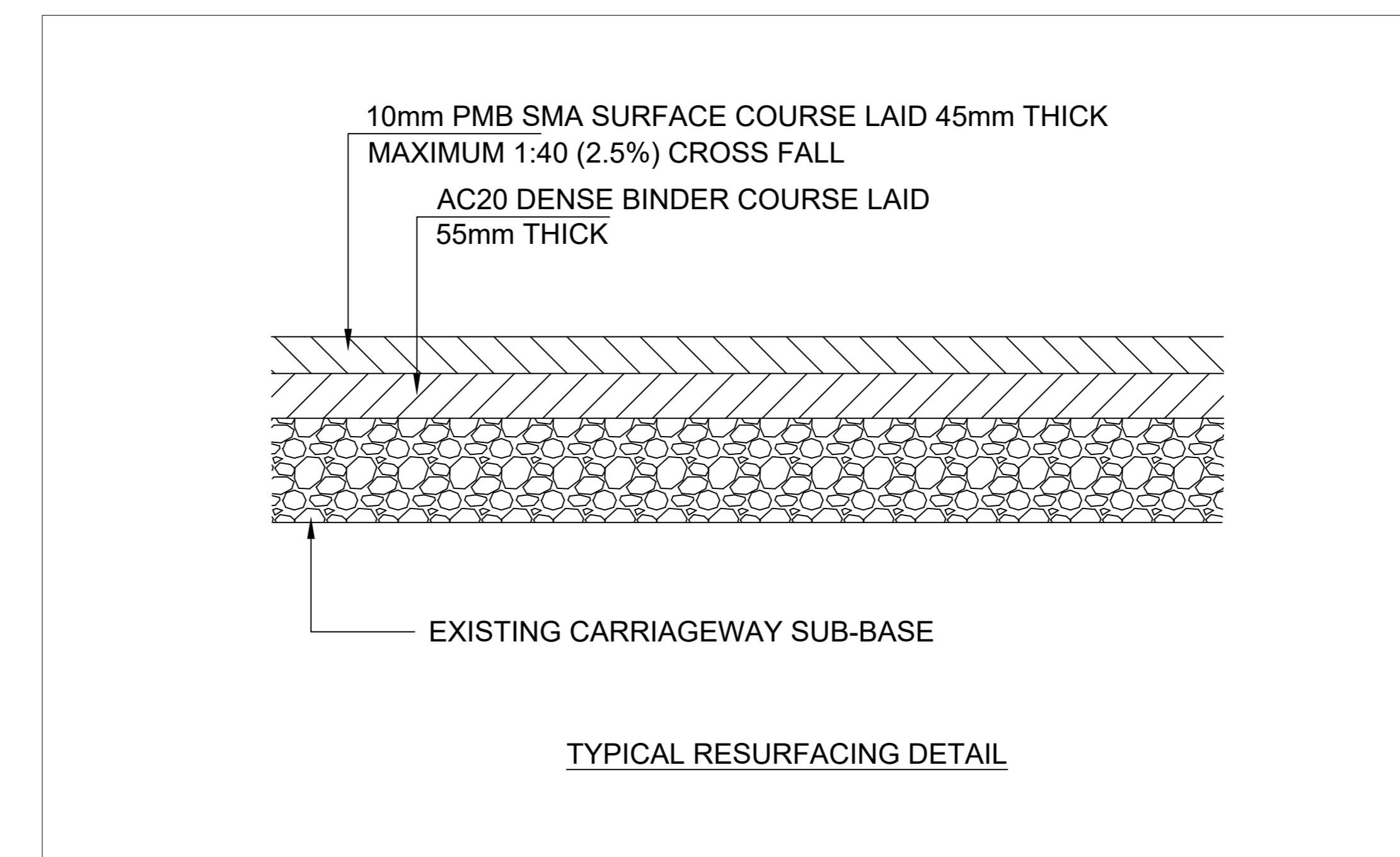
DRAFT		TENDER	X	CONSTRUCTION		AS BUILT	
DESIGNED	PS	DRAWN	PS	CHECKED	MM	APPROVED	MM
DATE	19/09/25	SCALE:	NOT TO SCALE	DRAWING No.	P60736-003		



LEGEND

■ PROPOSED CARRIAGEWAY RESURFACING - EXCAVATE AND DISPOSE EXISTING SURFACE TO A MAXIMUM DEPTH OF 100mm. APPLY BOND COAT, LAY A 55mm DEEP LAYER OF AC20 BINDER COURSE, APPLY BOND COAT AND LAY A 45mm DEEP LAYER OF SMA SURFACE COURSE. CARRIAGEWAY LEVEL MAY BE RAISED IN PLACES TO AID DRAINAGE. EXCAVATION/DISPOSAL OF MATERIAL TO BE KEPT TO A MINIMUM.

■ PROPOSED F1 ASPHALT FOOTWAY SURFACE - E1 EDGING.



REV	AMENDMENTS	BY	APPVD	DATE



ROADS AND TRANSPORTATION SERVICES

HEAD OF SERVICE - JOHN MITCHELL

TITLE:
ABERDOUR SILVER SANDS CAR PARK
GENERAL ARRANGEMENT
SHEET 4: CAFE AREA

DRAFT		TENDER	X	CONSTRUCTION		AS BUILT	
DESIGNED	PS	DRAWN	PS	CHECKED	MM	APPROVED	MM
DATE	19/09/25	SCALE:	NOT TO SCALE	DRAWING No.	P60736-004		