

Plan for Fife  
Partnership Directory  
2026

OurFife  
successful · confident · fairer

# Contents

<b>What is Community Planning?</b>	3	<b>Addressing the Climate Emergency Board</b>	18
<b>Governance Structure</b>	4	● Fife Environment Partnership	19
<b>Plan for Fife 2017-2027 Themes and Ambitions</b>	5	● Fife Local Biodiversity Partnership	20
<b>Fife Partnership Board</b>	6	<b>Tackling Poverty and Preventing Crisis Board</b>	21
<b>Fife Leadership Board</b>	7	● Opportunities Fife Partnership (OFP)	22
● Leadership Engagement Group	8	<b>Communities and Wellbeing Partnership</b>	23
● Plan 2027 Design Group	9	● Fife Alcohol & Drugs Partnership	24
● Senior Equalities Group	10	● Community Learning and Development Partnership	25
<b>Chief Officer Public Safety Group (COPs)</b>	11	● Volunteering Strategy Implementation Group	26
● Fife Adult Support & Protection Committee	12	● Food for Fife Partnership	27
● Child Protection Committee	13	<b>Children in Fife Partnership</b>	28
● Fife Violence Against Women Partnership	14	<b>Fife Community Safety Partnership</b>	29
● Multi-Agency Public Protection Arrangements (MAPPA)	15	<b>Fife Housing Partnership</b>	30
<b>Economy and Community Wealth Building Board</b>	16	<b>KnowFife Network</b>	31
● Welcome to Fife Industry Leadership Group	17		

# What is Community Planning?

Community Planning provides a basis for communities and public bodies to work together to design and deliver better services that will positively impact and make a real difference to people's lives, and especially for those who need services the most.

Every Local Authority in Scotland has a Community Planning Partnership (or CPP), which is the name given to all services that come together to actively contribute and participate in community planning. Fife's CPP is the Plan for Fife Partnership Board.

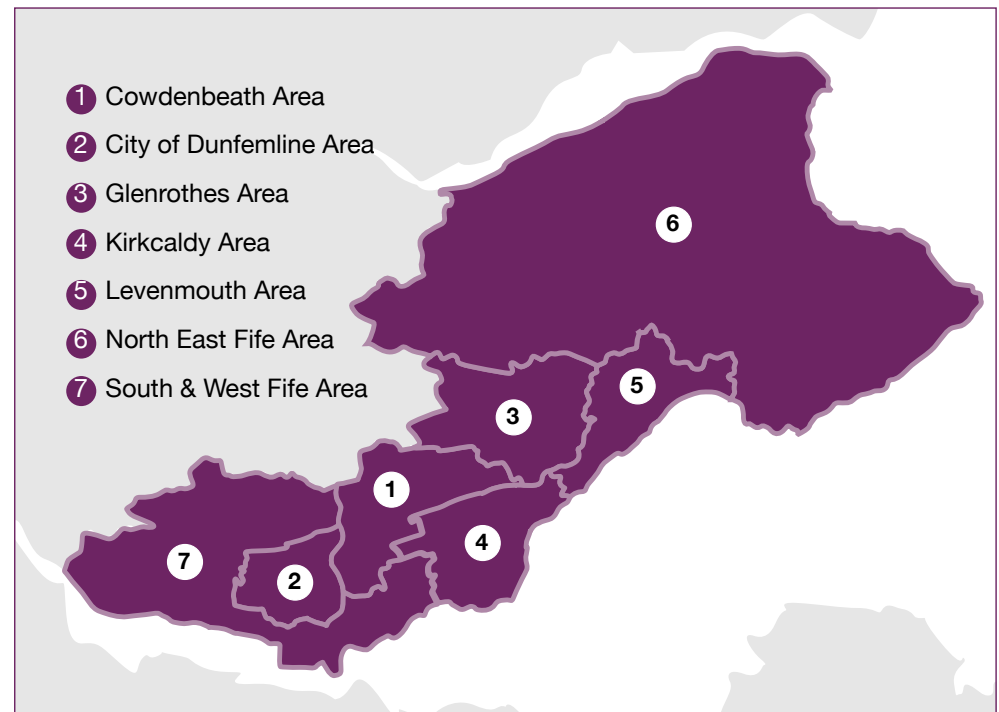
CPPs are responsible for producing two types of plans to identify and describe priorities and planned improvements at a local level to them.

The first plan is called a Local Outcomes Improvement Plan (or LOIP) which covers the whole council area. Fife's LOIP is the Plan for Fife.

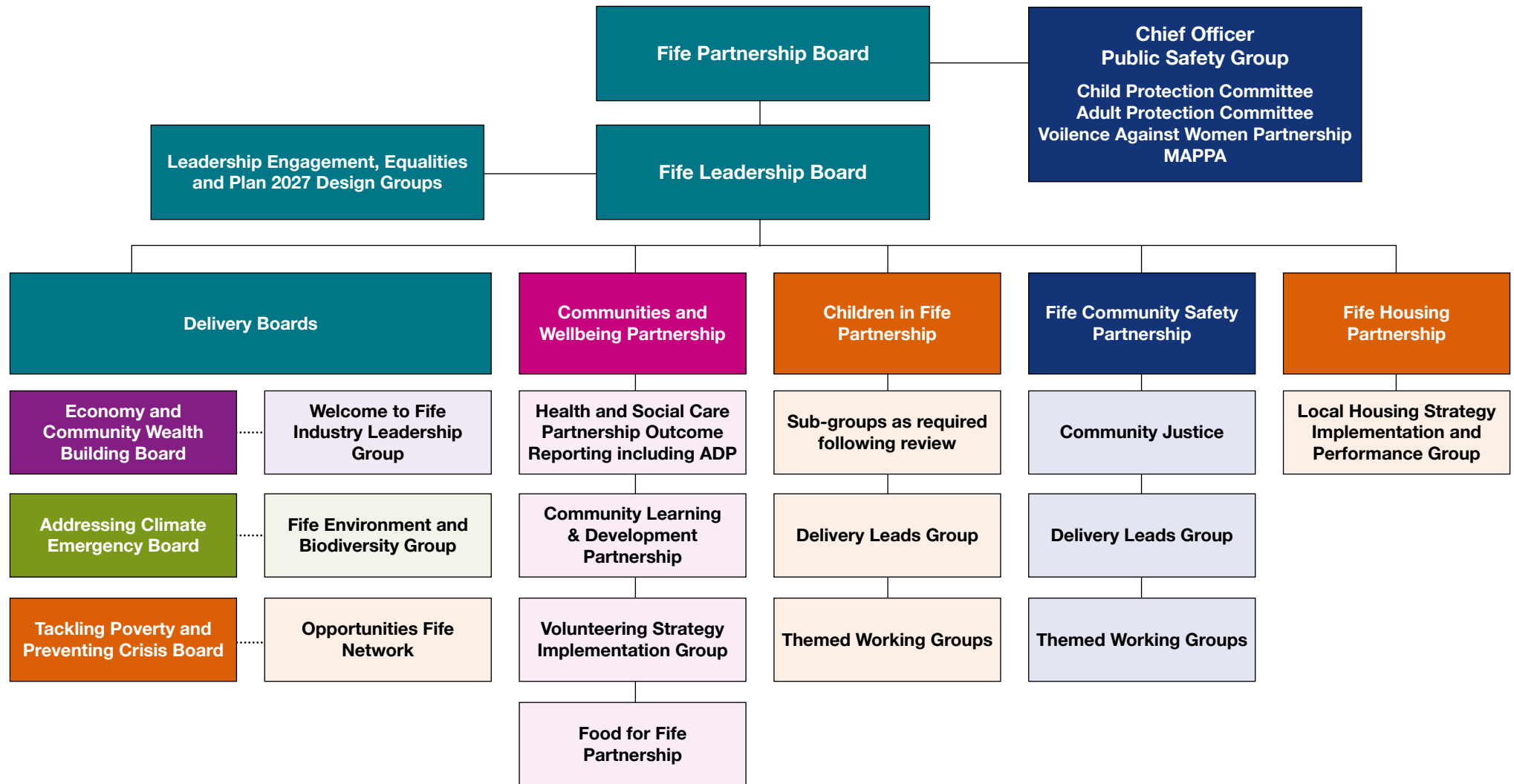
The second plan is Locality Plans which cover smaller areas within the CPP. This provides focus on specific areas that will benefit local areas from improvement. Fife has seven Locality Plans covering;

- Cowdenbeath Area
- City of Dunfermline Area
- Glenrothes Area
- Kirkcaldy Area
- Levenmouth Area
- North East Fife Area
- South & West Fife Area

It is important to have good community participation as this lies at the heart of community planning and supports the development, design and delivery of plans as well as routine and regular reviewing and reporting. CPPs should ensure everyone involved is clear about their role and what their responsibilities are.








# Governance Structure



KnowFife Network

# Plan for Fife 2017-2027 Themes and Ambitions

Theme	Ambition	Lead Board / Partnership
 <b>Opportunities for all</b>	<b>Fife has lower levels of poverty in line with national targets.</b>	Tackling Poverty & Preventing Crisis Board
	<b>Educational attainment continues to improve for all groups</b>	Children in Fife Partnership
	<b>Reduced levels of preventable ill health and premature mortality across all communities.</b>	Communities and Wellbeing Partnership
 <b>Thriving places</b>	<b>Everyone has access to affordable housing options.</b>	Fife Housing Partnership
	<b>Fife's main town centres stand out as attractive places to live, work and visit</b>	Economy & Community Wealth Building Board
	<b>All our communities benefit from low levels of crime and anti-social behaviour.</b>	Fife Community Safety Partnership
	<b>Every community has access to high quality outdoor, cultural and leisure opportunities.</b>	Communities and Wellbeing Partnership
 <b>Inclusive growth &amp; jobs</b>	<b>Economic activity and employment in Fife is improving faster than in the rest of Scotland.</b>	Economy & Community Wealth Building Board
	<b>Economic activity and employment in mid-Fife is catching up with the rest of Fife and Scotland.</b>	Economy & Community Wealth Building Board
	<b>Fife has year on year increases in visitor numbers and tourism spend.</b>	Economy & Community Wealth Building Board
 <b>Community led services</b>	<b>Our public services are more joined up and acting 'one step sooner'.</b>	Fife Leadership Board
	<b>Fife's communities and individuals are more involved in local decision making and helping to plan and deliver local services.</b>	Fife Leadership Board
 <b>Addressing climate change</b>	<b>Fife has lower levels of carbon emissions in line with national targets (75% by 2030 from 1990 baseline).</b>	Addressing the Climate Emergency Board

# Fife Partnership Board

## Overview

Fife Partnership Board is the Community Planning Partnership for Fife. It provides strategic leadership, overseeing partnership activity to support the delivery of its agreed vision and outcomes, as set out in the Plan for Fife. FPB's aim is to bring together local public service providers and communities to improve the quality of life for people who live in, work in or visit Fife.

## Contact

- [Fife.Partnership@fife.gov.uk](mailto:Fife.Partnership@fife.gov.uk)

## Convener

- **Councillor David Ross**

## Membership

- Elected Members (Convener)
- Chief Executive, Fife Council
- Chief Executive, NHS Fife
- Director of Public Health
- Chair of NHS Fife Board
- Director of Health & Social Care
- Department for Work and Pensions
- Chief Superintendent, Police Scotland (Fife)
- Community Engagement and Social Responsibility Manager, St. Andrews University
- Place Director, Scottish Government
- Area Commander, Scottish Fire & Rescue
- Principal and Chief Executive, Fife College
- Chief Executive, Fife Voluntary Action

## Meeting Frequency

- Quarterly

## Current Strategy/Plan

- [Plan for Fife 2017 - 2027](#)

## Plan for Fife Governance Route

- This is the most senior board within the Fife Partnership.

## Reporting Requirements

- [Strategic Assessment 2024](#)
- [Public Performance Report 2024/25](#)

## Additional Information

- [Fife Partnership Board](#)

# Fife Leadership Board

## Overview

Formerly known as the Renewal and Recovery Leadership Board, the Fife Leadership Board will:

Ensure that activity across delivery boards and partnership groups is aligned with the Plan for Fife ambitions;

Ensure that plans have a clear focus on local people and place leadership and community empowerment;

Provide leadership for the development of community wealth building approaches in Fife.

## Contact

- [Fife.Partnership@fife.gov.uk](mailto:Fife.Partnership@fife.gov.uk)

## Chair

- **Ken Gourlay**  
Chief Executive, Fife Council

## Membership

- Fife Council Chief Executive
- NHS Fife Chief Executive
- Delivery Board support leads
- NHS Fife resource directors
- Fife Council resource directors
- Fife Voluntary Action
- Fife College

## Meeting Frequency

- Quarterly

## Current Strategy/Plan

- [Our Priorities 2024-2027](#)

## Plan for Fife Governance Route

- [Fife Partnership Board](#)

## Additional Information

A review was carried out in 2024 to determine the current position, and it was decided to retain the focus and commitments in 2024-27 that were outlined in the Recovery and Renewal Update 2021-24. A revised plan for the 2024-27 will not be published as the ambitions and objectives are still fully articulated in the original 10 year plan and the 2021 update.

The latest Strategic Assessment shows that Fife continues to face persistent issues which are causing social, economic and environmental harm to people and communities.

The key focus areas for 2024-27 will be;

- Tackling the root causes of poverty and inequality
- Growing the local economy and building community wealth
- Addressing the impacts of climate change

# Leadership Engagement Group

## Overview

To bring leading stakeholders together to improve collaboration, offer development opportunities, and support clear communication between partners.

The Leadership Engagement Group will develop and implement principles and values to provide consistency to any work and activities carried out.

The Leadership Engagement Group will encourage and support cascading of communications to partner organisations.

The Leadership Engagement group will embed community planning as standard practice.

The Leadership Engagement Group is in the early stages of development and will continue to develop and work alongside the Plan 2027 Design Group.

## Contact

- [Fife.Partnership@fife.gov.uk](mailto:Fife.Partnership@fife.gov.uk)

## Membership

- Organisational Development and Culture, NHS Fife
- Policy & Communications Service, Fife Council
- HR, Workforce and Organisations Development, Fife Council
- Localities & Community-Led Support, Fife HSCP
- Area Commander, Scottish Fire & Rescue Service
- Heads of Service, Education, Fife Council
- Culture and Resources, Fife College
- Organisation Development and Culture, Fife HSCP
- Acting Inspector, Police Scotland (Fife Division)
- Employability Development Manager, Fife Voluntary Action
- Policy and Place, Fife Council

## Plan for Fife Governance Route

- [Fife Leadership Board](#)

# Plan 2027 Design Group

## Overview

To explore new and alternative perspectives to shape and develop the next Plan for Fife cycle and from 2027 onwards.

The Plan 2027 Design Group will explore the next steps for the Plan for Fife and what actions are needed to implement these.

The Plan 2027 Design Group will develop principles and values to ensure health inequalities is the primary driver of activity moving forward.

The Plan 2027 Design Group is in the early stages of development and will continue to develop and work in alignment with the Leadership Engagement Group.

## Contact

- [Fife.Partnership@fife.gov.uk](mailto:Fife.Partnership@fife.gov.uk)

## Membership

- Director, Public Health Scotland
- Communities Directorate, Fife Council
- Heads of Service, Education, Fife Council
- Planning and Transformation, NHS Fife
- Research, Fife Council
- Chief Executive, Fife Voluntary Action
- Community Engagement & Social Responsibility, University of St. Andrews
- Primary and Preventive Care Services, Fife HSCP
- Planning Directorate, Fife Council
- Group Commander, Scottish Fire and Rescue Service
- Waste Operations, Fife Council
- Improvement, Insight and Brand, Fife College

## Plan for Fife Governance Route

- [Fife Leadership Board](#)

# Senior Equalities Group

## Overview

The Equality Act 2010 sets out the public sector general equality duty requiring public authorities to pay due regard to the need to eliminate unlawful discrimination, victimisation and harassment; advance equality of opportunity; and foster good relations across the protected characteristics of age, disability, gender reassignment, pregnancy and maternity, race, religion and belief, sex, sexual orientation, and marriage and civil partnership. The Council's commitment to equality and diversity, however, goes beyond the equality outcomes which are set in line with the Public Sector Equality Duty.

The role of the Senior Equalities Group involves ensuring that equality outcomes are being met across the Council and continuing to work with all Partnerships in the Plan for Fife.

## Contact

- [enquiry.equalities@fife.gov.uk](mailto:enquiry.equalities@fife.gov.uk)

## Membership

- Fife Centre for Equalities
- NHS Fife
- Police Scotland (Fife Division)
- Unions
- Fife Council representative (including Place, Employability, Facilities, Education, Business Support and CLD)

## Meeting Frequency

- Quarterly

## Current Strategy/Plan

- [Equality Outcomes 2025-2029](#)

## Plan for Fife Governance Route

- [Fife Leadership Board](#)

## Additional Information

The new Equality Outcomes will be published from April 2025. This will cover period 2025-2029.

Previous published reports:

- [Equality Outcomes Progress 2023-25](#)
- [Equality and Diversity in Employment Report 2025](#)

For more information please visit [www.fife.gov.uk/equality](http://www.fife.gov.uk/equality)

# Chief Officer Public Safety Group (COPs)

## Overview

Public protection is a generic term used to describe a range of local structures to respond to child protection, adult support and protection, Violence Against Women and Girls Networks, high risk offenders via Multi Agency Public Protection Arrangements and suicide prevention.

The COPs Group is the reporting Board for MAPPAs, Child and Adult Protection Committees and Fife Violence Against Women Partnership. This group provides leadership, direction and accountability and ensures collective responsibility and collaborative working approaches to protect children, young people, families, and individuals and to ensure improved outcomes for adults at risk.

Chief Officers will;

- Identify and commission inter-agency activity for protection of children and adults
- Be responsible and accountable for improving the experience of and outcomes for children and adults who may need protection
- Consider issues that have an impact on wider public protection arrangements and development
- Agree Annual Reports and Improvement/Business Plans
- Consider performance reports and findings from case reviews

## Contact

- [Fife.Partnership@fife.gov.uk](mailto:Fife.Partnership@fife.gov.uk)

## Membership

- NHS Fife, Chief Executive
- Fife Council, Chief Executive
- Local Commander, Police Scotland (Fife Division)
- Authority Reporter

## Meeting Frequency

- Quarterly

## Committees/ Partnerships reporting to COPs

- [Fife Adult Support and Protection Committee](#)
- [Child Protection Committee](#)
- [Fife Violence Against Women Partnership](#)
- [Multi-Agency Public Protection Arrangement \(MAPPAs\)](#)

# Fife Adult Support & Protection Committee

## Overview

The Fife ASPC is the primary strategic planning mechanism for inter-agency adult support and protection work in Fife bringing together all key partners. To operate effectively all office holders and public bodies collaborate on the exercise of functions which relate to the safeguarding of adults at risk in Fife.

The key functions of the ASPC as defined in the 2007 Act are:

- To keep under review the procedures and practices of the public bodies and office holders relating to the safeguarding of adults at risk;
- To give information or advice, or make proposals on the exercise of functions which relate to the safeguarding of adults at risk;
- To make, assist in, or encourage the making of, arrangements for improving the skills and knowledge of officers or employees who have responsibilities relating to the safeguarding of adults at risk; and
- Any other function relating to the safeguarding of adults at risk as the Scottish Ministers may specify.

In performing these functions the ASPC must have particular regard to improving co-operation between and across each of the public bodies and office holders.

## Contact

- [ASPC.Admin@fife.gov.uk](mailto:ASPC.Admin@fife.gov.uk)

## Membership

- The ASPC is made up of senior representatives of key agencies who work together to effectively discharge its obligations in respect of policy and practice in adult support and protection matters.

## Meeting Frequency

- Quarterly

## Current Strategy/Plan

- [Strategic Improvement Plan 2025-27](#)

## Plan for Fife Governance Route

- [Chief Officers Public Safety Group](#)

## Reporting Requirements

- Quarterly reporting to COPS.
- Bi-annual report to ASPC

## Additional Information

- The Strategic Improvement Plan 2025-27 will go to Committee in February 2025 for approval.

# Child Protection Committee

## Overview

Fife Child Protection Committee (CPC) has a clear vision for all children in Fife to be safe and protected from harm. As a partnership, Fife's CPC exists to develop, implement, and improve child protection strategy and thread child protection work through all services agencies and the community of Fife. At the heart of this work is the national vision, "It's everyone's job to make sure I'm all right."

The Fife CPC is a locally based, inter-agency strategic partnership that spearheads the development of local inter-agency Child Protection Policy and Practice. The Committee collaborates with the Scottish Government and other partners nationally to implement Policy and Practice Developments. The Committee is committed to promoting individual and collective leadership, recognising cross-cutting themes, and acknowledging the complexity of child protection work.

## Contact

- [CPC@Fife.gov.uk](mailto:CPC@Fife.gov.uk)

## Membership

- Independent Chair (Chair)
- Chief Social Work Officer (Vice Chair)
- Detective Superintendent for Public Protection Unit , Police Scotland.
- Third Sector Representative.
- Lead Nurse Child Protection, NHS Fife.
- Lead Paediatrician, Child Protection NHS Fife
- Head of Education
- NHS Fife's Executive Director of Nursing.
- Head of Service, Primary and Preventative Care Services, Fife Health and Social Care
- Locality Reporter Manager, Tayside and Fife Locality
- Head of Communities and Corporate Development
- Head of Housing Services
- Lead Officer, Child Protection Committee.
- Chair of the Violence Against Women Partnership.
- Service Manager Alcohol and Drugs Partnership.
- Community and Neighbourhood Representative.

## Meeting Frequency

- Quarterly (plus 2x development sessions).
- Extraordinary meetings are scheduled as and when required).

## Current Strategy/Plan

- [Child Protection Committee Improvement Plan 2023-26](#)

## Plan for Fife Governance Route

- [Chief Officers Public Safety Group](#)

## Reporting Requirements

- Annual Reporting on the work of the CPC

## Additional Information

Previous Annual reports:

- [Fife CPC Annual Report 2022-23](#)
- [Fife CPC Annual Report 2023-24](#)

# Fife Violence Against Women Partnership

## Overview

Fife Violence Against Women Partnership (FVAWP) co-ordinates activity towards ending violence against women in Fife across statutory and third sector organisations. The partnership is committed to addressing four key priorities in line with Scotland's Equally Safe Strategy.

- Priority 1: Scottish society embraces equality and mutual respect, and rejects all forms of violence against women and girls
- Priority 2: Women and girls thrive as equal citizens: socially, culturally, economically and politically
- Priority 3: Interventions are early and effective, preventing violence and maximising the safety and wellbeing of women, children and young people
- Priority 4: Men desist from all forms of violence against women and girls and perpetrators of such violence receive a robust and effective response

## Contact

- [FVAWP@fife.gov.uk](mailto:FVAWP@fife.gov.uk)

## Meeting Frequency

- The Executive Committee meets 4 or 5 times per year.
- The priority groups meet at least Quarterly.

## Current Strategy/Plan

- [FVAWP Strategy and Action Plan 2023-25](#)

## Plan for Fife Governance Route

- [Chief Officer Public Safety Group](#)

## Reporting Requirements

Quarterly and annually.

## Additional Information

Previous Reports

- [FVAWP Annual Report 2021-2022](#)
- [FVAWP Annual Report 2022-2023](#)
- [FVAWP Annual Report 2023-2024](#)
- [FVAWP Action Plan 2023-2025](#)

## Membership

- Crown Office Prosecution Service
- Fife Alcohol and Drug Partnership
- Fife Centre for Equalities
- Fife College
- Fife Gingerbread
- Fife Rape and Sexual Assault Centre
- Fife Women's Aid
- Kingdom Abuse Survivors Project
- Ministry of Defence
- NHS Fife
- Police Scotland (Fife Division)
- Sacro
- Safe Space
- St. Andrews University
- Scottish Prison Service
- Shakti Women's Aid
- Third Sector Substance Misuse Agencies
- Victim Support
- Zero Tolerance
- Fife Council Representatives (including Children and Families Social Work, Criminal Justice Social Work, Adult Services, Housing Services, Community Services, Equalities, Educations, Community Safety, Human Resources)

# Multi-Agency Public Protection Arrangements (MAPPA)

## Overview

The fundamental purpose of the MAPPA is public protection and the reduction of serious harm. The protection of children, adults at risk of harm, and other members of the public are paramount.

The MAPPA offers the potential for a co-ordinated approach to the management of people who commit sex offences and the critical few other high-risk offenders who pose a risk of serious harm by reason of their conviction/sentence, as assessed by Responsible Authorities such as Fife Council, Police Scotland, NHS Fife, and the Scottish Prison Service.

The principal responsibility to protect the public from offenders that fall within the MAPPA remit lies with the Responsible Authorities, but many other agencies play important roles in managing offenders in the community. It is through information sharing under a 'duty to co-operate' with the Responsible Authorities that a true understanding of offenders' behaviours can be ascertained.

In Fife the MAPPA Strategic Oversight Group (SOG) is supported by the MAPPA Operational Group (MOG) which focusses on operational issues and self-evaluation, audit and training. The membership of the SOG is made up of strategic and operational managers who are directly involved in the delivery of MAPPA from all disciplines. The MAPPA Coordinator sits on both strategic and operational groups. They carry out tasks as directed by the SOG and provide assurance that the operational delivery of MAPPA remains effective and robust.

## Contact

- [Fife.Partnership@fife.gov.uk](mailto:Fife.Partnership@fife.gov.uk)

## Membership

- Police Scotland
- Fife Council
- NHS Fife
- Scottish Prison Service

## Meeting Frequency

- Strategic Oversight Group – Quarterly
- MAPPA Operational Group – Quarterly

## Current Strategy/Plan

- [MAPPA Annual Report 2024-25](#)

## Plan for Fife Governance Route

- [Chief Officers Public Safety Group](#)

## Reporting Requirements

# Economy and Community Wealth Building Board

## Overview

The Board provides senior leadership and oversight for the delivery of Fife's Economic Strategy 2023-30 and the Plan for Fife 2024-2027 Economy and Community Wealth Building priorities, as well as identifying and progressing opportunities for collaboration across the partnership. The Board ensures that key dependencies are managed, partners are sufficiently engaged, and that sufficient progress is being made.

## Contact

- [Fife.Partnership@fife.gov.uk](mailto:Fife.Partnership@fife.gov.uk)

## Membership

- Fife Chamber of Commerce
- Fife College
- Fife Council
- Fife Health & Social Care Partnership
- Fife Voluntary Action
- NHS Fife
- Scottish Care
- Scottish Enterprise
- Skills Development Scotland
- Welcome to Fife Industry Leadership Group
- University of St Andrews

## Meeting Frequency

- Quarterly

## Current Strategy/Plan

- [Fife Economic Strategy 2023-2030](#)
- [Fife-Anchor-Charter.pdf](#)
- The board is identifying areas of focus to direct collaborative partnership work that delivers on members' shared priorities.

## Plan for Fife Governance Route

- [Fife Leadership Board](#)

## Reporting Requirements

- Reports to the Fife Leadership Board
- Annual reports submitted to the Fife Partnership Board

## Additional Information

Groups/Networks that report into Board:

- [Welcome to Fife Industry Leadership Group](#)
- [Opportunities Fife Partnership \(informally\)](#)

# Welcome to Fife Industry Leadership Group

## Overview

The Welcome to Fife Industry Leadership Group informs and oversees the activities of the Fife Tourism Strategy. The strategy aims to ensure that there is a quality tourism offering across Fife. The strategy will ensure that the tourism sector is leading the way on working towards local and national sustainability ambitions, and that the sector benefits from increased digital capability and use of innovation in visitor information and experiences.

## Contact

- [Promoting.Fife@fife.gov.uk](mailto:Promoting.Fife@fife.gov.uk)

## Membership

- Spokesperson for Finance, Economy and Strategic Planning (Fife Council)
- OnFife
- Fife Coast & Countryside Trust
- VisitScotland
- Fife College
- 6x Local Tourism Associations
- Industry representatives including accommodation, attractions etc

## Meeting Frequency

- Quarterly

## Current Strategy/Plan

- [Fife Tourism Strategy 2023-2030](#)

## Plan for Fife Governance Route

- [Economy and Community Wealth Building Board](#)

## Reporting Requirements

No formal reporting requirements however an annual briefing note is provided to elected members and tourism input is generated for the Economy & Community Wealth Building Board's annual report to the Fife Partnership Board.

## Additional Information

Welcome to Fife has an annual action plan which is monitored regularly to measure progress and outcomes. This is reported on quarterly to the Welcome to Fife Group and annually to Fife Council.

# Addressing the Climate Emergency Board

## Overview

The Addressing the Climate Emergency Board was established in 2021 with the remit to:

Lead and manage the delivery of a Plan for Fife reform and renewal priority of Addressing the Climate Emergency, and

Ensure risks affecting the delivery of priority outcomes are being effectively managed

The ACE Board covers wider partners with a focus on climate supported by a joint delivery plan with a focus on key project areas.

Four key areas were identified to focus on;

- Decarbonise Fife through energy efficiency
- Make Fife more resilient to the impacts of climate change including nature-based solutions
- Reduce our climate impact from travel and waste
- Protecting and enhancing biodiversity

Activity areas to support this;

- Adaptation
- Biodiversity
- Buildings and assets
- Communications
- Procurement
- Travel
- Waste

## Contact

- [Fife.Partnership@fife.gov.uk](mailto:Fife.Partnership@fife.gov.uk)

## Membership

- Fife Council (Executive Director – Place, and various Heads of Service)
- University of St. Andrews
- Fife College
- NHS Fife
- Fife Coast and Countryside Trust

## Meeting Frequency

- Quarterly

## Current Strategy/Plan

The focus of the ACE Board is to develop core areas of collaborative work, supporting each of the core organisations/ partners of the Board in delivering their individual strategies/plan. A joint delivery plan has been developed to identify the areas of work and actions to take these forward.

## Plan for Fife Governance Route

- [Fife Leadership Board](#)

## Reporting Requirements

- Reports to the Fife Leadership Board
- Annual reports submitted to the Fife Partnership Board

## Additional Information

- Groups/Networks reporting into Board;
- Fife Environment Partnership and Fife Biodiversity Partnership
  - A Communication Sub-Group supports the ACE Board through a joint communications strategy and coordinates partnership communications
  - A variety of Climate related projects feed into the ACE Board for Scrutiny after going through the advisory Fife Environment Partnership.

# Fife Environment Partnership

## Overview

The Fife Environment Partnership is a formal group which covers climate and nature emergencies that are not covered in other areas of Fife Council. The remit of this group tends to change over time and includes: Climate Fife and the Big Moves. Other strategies are consulted on by this group where it impacts areas such as the energy transition, resilience to unavoidable climate change, and supporting a just transition for communities nature in Fife.

## Contact

- [Fife.Partnership@fife.gov.uk](mailto:Fife.Partnership@fife.gov.uk)

## Membership

- Public Sector Bodies (Fife Council, NHS Fife, Fife Coast & Countryside Trust, SEPA, Nature Scot, Scottish Water, Scottish Forestry)
- Social Housing
- Third Sector (Fife Voluntary Action, Green Action Trust)
- Further and Higher Educations (Fife College, University of St. Andrews)
- FCCAN – Fife Communities Climate Action Network
- Community Climate Networks

## Meeting Frequency

- Quarterly

## Current Strategy/Plan

- [Climate Fife 2024](#)
- [Local Biodiversity Action Plan](#)
- [Resources Strategy](#)
- [LHEES Strategy](#)

## Plan for Fife Governance Route

- [Addressing the Climate Emergency Board](#)

## Reporting Requirements

- Annual summary report to Fife Environmental Partnership

## Additional Information

The Fife Environmental Partnership support the FifeCoP (Conference of Partners) which bring together public bodies around Climate Nature and action.

# Fife Local Biodiversity Partnership

## Overview

The Fife Biodiversity Partnership is a formal group which covers represent and champions biodiversity across the Kingdom. The remit of this group includes development, delivery and reporting of the Local Biodiversity Action Plan.

## Contact

- [nature.info@fife.gov.uk](mailto:nature.info@fife.gov.uk)

## Membership

Buglife, CLEAR, Crail Golfing Society, Falkland Estate, Fife Coast and Countryside Trust, Fife College, Fife Council, Fife Red Squirrel Group, Forestry and Land Scotland, Forestry Scotland, Forth Rivers Trust, Kinkell Byre, Marine Conservation Society, NatureScot, NHS Fife, Police Scotland, RSPB, SRUC, Scottish Water, Scottish Wildlife Trust, SEPA, St Andrews Botanic Gardens, St Andrews Links Trust, St Andrews University, Woodland Trust.

This list does not include individuals who also are part of this group.

## Meeting Frequency

- Quarterly (additional meetings scheduled as necessary)

## Current Strategy/Plan

- **Local Biodiversity Action Plan 2026**  
A revised and updated Fife LBAP to 2045 is being prepared and is scheduled for publication in the first half of 2025.

## Plan for Fife Governance Route

- **Addressing the Climate Emergency Board**

## Reporting Requirements

- No formal reporting requirement.

## Additional Information

The Fife Biodiversity Partnership supports and leads on delivering the Local Biodiversity Action Plan. The Action Plan will help further people's understanding of nature and tackle locally some of the threats that face biodiversity. More information can be found here: [Local Biodiversity Action Plan](#).

# Tackling Poverty and Preventing Crisis Board

## Overview

The Tackling Poverty and Preventing Crisis Board oversees the work carried out by sub-groups and networks and the activities carried out within these to achieve the poverty delivery plan.

## Contact

- [Fife.Partnership@fife.gov.uk](mailto:Fife.Partnership@fife.gov.uk)

## Membership

- Fife Council Representatives (Executive Director of Communities (Joint Chair), Head of Customer and Online Services, Areas Services Manager, Head of Communities & Neighbourhoods, Manager of Communications and Customer Insight, Research Manager, Head of Education and Children's Services, Education Manager, Finance, Head of Revenue & Commercial Services, Head of Housing, Project Manager in Community Wealth Building, Opportunities Fife Network)
- Director of Public Health (Joint-Chair)
- Chief Executive Officer, Fife Voluntary Action
- Fife Health & Social Care Partnership
- Service Manager, Alcohol & Drug Partnership, Fife HSCP
- Fife Gingerbread
- Citizen Advice Rights Fife

## Meeting Frequency

- Every 8 weeks

## Current Strategy/Plan

- Tackling Poverty & Preventing Crisis Delivery Plan

## Plan for Fife Governance Route

- Fife Leadership Board

## Reporting Requirements

- **Annual report to Fife Partnership Board**
- It is the responsibility of the TPPC to provide the Scottish Government a Child Poverty Report on an annual basis

## Additional Information

Groups/Networks reporting into Board:

- **Opportunities Fife Partnership**

# Opportunities Fife Partnership (OFP)

## Overview

The Opportunities Fife Partnership is Fife's Local Employability Partnership (LEP). It is a strategic, decision making partnership with responsibility for delivering aspects of the Plan for Fife's Inclusive Jobs and Growth Ambition. The OFP's Mission is: "To shape and drive responsive, sustainable approaches to skills and employability services that reflect current and future aspirations of individuals and employers". Its key priorities are to; support Inclusive Jobs & Growth; Tackling Poverty & Inequalities and to ensure that the Client Experience is at the heart of all delivery on the Employability Pathway. The OFP manages the delivery of programmes on the Employability Pathway supporting a range of public, private and third sector delivery partners. Activity is funded through both No One Left Behind from Scottish Government and UK Shared Prosperity Fund from UK Government, after an open commissioning process.

Opportunities Fife has been seen and used as an example of best practice by the Scottish Government.

## Contact

- [opportunities.fife@fife.gov.uk](mailto:opportunities.fife@fife.gov.uk)

## Membership

- Department for Work and Pensions
- Developing Young Workforce
- Fife Chamber of Commerce
- NHS Fife
- Fife Health & Social Care Partnership
- Fife College
- Fife Voluntary Action
- Skills Development Scotland
- Fife Council representatives (Elected Member, Education, Communities, Business & Employability)

## Meeting Frequency

- Quarterly

## Current Strategy/Plan

- [Opportunities Fife Partnership Plan 2024-2030](#)

## Plan for Fife Governance Route

- [Tackling Poverty and Preventing Crisis Board](#)

## Reporting Requirements

- An Annual Report is submitted to Fife Council's Scrutiny Committee and feedback is provided to the Tackling Poverty and Preventing Crisis Board

## Additional Information

Partners are treated as equals around the table in terms of commitment and expectation.

# Communities and Wellbeing Partnership

## Overview

The Communities & Wellbeing Partnership (CWP) is the strategic community planning partnership which has oversight of work to improve health and wellbeing and reduce health inequalities in Fife. It brings together key delivery partners to:

Better understand current challenges to health and wellbeing, and health inequalities

Identify successes, gaps and actions needed to make a sustained difference to the health and wellbeing of people in Fife

## Contact

- [Fife.Partnership@fife.gov.uk](mailto:Fife.Partnership@fife.gov.uk)

## Membership

- Fife Health & Social Care Partnership
- NHS Fife
- Fife Council
- Fife Sports & Leisure Trust
- Fife Cultural Trust
- CLD Partnership
- Third Sector

## Meeting Frequency

- Quarterly

## Current Strategy/Plan

- Health and Wellbeing Delivery Plan 2022-2024

## Plan for Fife Governance Route

- Fife Leadership Board

## Reporting Requirements

- Annual reports to Fife Leadership Board

## Additional Information

Groups/Networks reporting into Partnership

- Health & Social Care Partnership Outcomes Reporting including Alcohol & Drugs Partnership
- Community Learning and Development Partnership
- Volunteering Strategy Implementation Group
- Food for Fife Partnership

# Fife Alcohol & Drugs Partnership

## Overview

Alcohol and Drug Partnership (ADP) is a strategic partnership of the Health and Social Care Partnership (HSCP), aiming to reduce the prevalence, impact and harms associated with problematic alcohol and drug use throughout Fife for individuals, children, young people, families and communities.

The partnership comprises of senior officers of statutory authorities and representatives of the third sector agencies with an interest in or a shared responsibility for meeting the various care groups' needs. The ADP Committee has a direct reporting link to the HSCP and the Scottish Government, on progress and improvement achieved from all allocated investment. The ADP consists of a governing committee headed by a Chair and subgroups tasked to undertake specific work on behalf of the Committee.

Fife ADP Committee takes a responsibility for strategic planning, setting the direction and making resource and investment decisions based on local strategic priorities.

## Contact

- [Alcohol.DrugInfo@fife.gov.uk](mailto:Alcohol.DrugInfo@fife.gov.uk)

## Meeting Frequency

- ADP Committee – quarterly

## Current Strategy/Plan

- [Fife ADP Strategy 2024-2027](#)
- [Fife ADP Strategy 2024-2027 Easy Read](#)

## Plan for Fife Governance Route

- [Communities & Wellbeing Partnership](#)

## Reporting Requirements

- ADP Committee
- Quality and Community Committee of the HSCP
- Finance and Scrutiny Committee (where there are financial components)
- Fife HSCP Integration Joint Board (IJB)
- Public Health and Wellbeing Committee of the NHS Board

## Additional Information

Each ADP is required to report to Scottish Government providing updates and assurance around ADP delivery.

- [Fife ADP Annual Report 2022-2023](#)
- [Fife ADP Annual Report 2023-2024](#)
- [Fife ADP Annual Report 2024-2025](#)

## Membership

- Director of Health & Social Care Partnership
- Head of Primary & Preventative Care
- Head of Complex & Critical Care
- Senior Fife ADP Representative
- Principal Information Analyst - Strategic Planning & Performance
- Clinical Service Manager of NHS Addictions
- Director of Pharmacy and Medicines
- Deputy Director of Pharmacy and Medicines
- Controlled Drugs Accountable Officer
- Chief Finance Officer
- Head of Addictions Psychological Therapies Service
- Clinical Lead - Addiction Services
- Scottish Prison Services Representative
- Service Manager (Strategic Development - Criminal Justice)
- Police Scotland Representative
- Family Support Service Manager
- Public Health Representative
- Education Quality Improvement Officers
- Scottish Recovery Consortium (Lived Experience Panel)
- FIRST for Fife (Residential and Rehabilitation)
- Clued Up (Youth & Young People's Services)
- Local Councillors

# Community Learning and Development Partnership

## Overview

The Scottish Government have placed a statutory duty on every Local Authority to ensure adequate and appropriate CLD provision is in place and to produce a 3-year plan outlining how this will be achieved.

The Requirements for Community Learning & Development (Scotland) Regulations', set out the following policy goals:

- To ensure communities across Scotland – particularly those that are disadvantaged - have access to the CLD support they need
- To strengthen coordination between the full range of CLD providers – ensuring that CPPs, local authorities and other providers of public services respond appropriately to the expectations set by the CLD Strategic Guidance
- To reinforce the role of communities and learners in the assessment, planning, and evaluation processes, enabling them to shape CLD provision
- To make the role and contribution of CLD more visible

The nationally agreed priorities for effective Community Learning & Development practice are

- Improved life chances for people of all ages, through learning, personal development, and active citizenship and
- Stronger, more resilient, supportive, influential, and inclusive communities.

The Fife CLD Partnership is responsible for strategic oversight, scrutiny of, and reporting on, the Community Learning and Development (CLD) Plan for Fife. The partnership is co-chaired by the local authority and Fife Voluntary Action, as the regional third sector inter-face organisation.

## Contact

- [cld.bsu@fife.gov.uk](mailto:cld.bsu@fife.gov.uk)

## Membership

- Fife Council representative (Education, Communities & Neighbourhoods, Area Community Development Teams, CLD Development Workers)
- Fife Centre for Equalities
- Fife Voluntary Action
- Youth First
- Workers Education Association
- Fife College
- NHS Fife

## Meeting Frequency

- Quarterly

## Current Strategy/Plan

- **Community Learning and Development Plan 2024-2027**

## Plan for Fife Governance Route

- **Communities & Wellbeing Partnership**

## Reporting Requirements

- Annual Report to Community & Wellbeing Partnership
- People and Communities Scrutiny Committee
- Area Committees

## Additional Information

This first version of the CLD Plan for 2024-27 is a one-year bridging plan that will focus on our year one actions. Actions in year one will further inform our planned actions for years two and three. We are also reviewing the membership of the CLD Partnership to ensure our key partners are fully engaged and membership is fully representative of learning and development providers and partners.

# Volunteering Strategy Implementation Group

## Overview

The Volunteering Strategy Implementation Group (Vol SIG) was established to implement the action plan which set out what the Volunteering Strategy will achieve in its current planning cycle.

## Contact

- [Volunteering@fva.org](mailto:Volunteering@fva.org)

## Membership

- Fife Council representatives (Policy Officer, Head of Communities & Neighbourhoods, Active Schools)
- NHS Fife
- Fife Health & Social Care Partnership
- Fife Sports & Leisure Trust
- Youth First
- CARF
- Department for Work & Pensions
- Fife Gingerbread
- Salvation Army

## Meeting Frequency

- Quarterly

## Strategy/Plan

- The Volunteering Strategy 2021-24 Updated and refreshed for 2024-27

## Plan for Fife Governance Route

- **Communities & Wellbeing Partnership**

## Reporting Requirements

- Annual report to Communities & Wellbeing Partnership which then reports into Fife Partnership Board.

## Additional Information

- 6 monthly/annual report goes to Fife Voluntary Action
- Quarterly report to Volunteering Managers Forum

# Food for Fife Partnership

## Overview

The Food4Fife Partnership was established in 2021 with a recognition for the need for partners from different organisations and enterprises to collaborate. The purpose of the Partnership is to work across boundaries and disciplines to address the key challenges for Food in Fife. The vision of the Partnership is to, “Create a sustainable food culture for a health Fife”.

## Contact

- [Fife.Partnership@fife.gov.uk](mailto:Fife.Partnership@fife.gov.uk)

## Membership

- Fife Council representatives (Business and Employability, Communities and Corporate Development, Facilities Management, Planning, Procurement)
- NHS Fife representatives (public health, catering, estates and facilities)
- National Services Scotland (catering procurement)
- Health and Social Care Partnership (Health promotion)
- Fife College representatives (Faculty of Business, Enterprise and Tourism, Food Procurement)
- St. Andrews /University representatives (Procurement)
- Various Food Businesses Representatives
- Third Sector Organisations

## Meeting Frequency

- Every 6 weeks

## Current Strategy/Plan

- [Food for Fife Action Plan 2024-2029](#)

## Plan for Fife Governance Route

- [Communities & Wellbeing Partnership](#)

## Reporting Requirements

The Food4Fife Strategy actions will be monitored through the Food for Fife Partnership governance structure. There will be ongoing updates with reporting on each of the Pillars. The action plans will respond and develop each year as a living agile document.

# Children in Fife Partnership

## Overview

Children in Fife is the Governance Group for Fife Children's Services Partnership and oversees the partnership's wider approach to prevention and early intervention

Children in Fife:

Oversees statutory planning requirements relating to all aspects of strategic planning for children's services.

Provides a forum for coordinating work across all aspects of children's services – ensuring alignment of approaches for children and young people at risk of harm, in need of care, or in need of protection with work undertaken by the Corporate Parenting Board and Child Protection Committee being shared.

## Contact

- [Fife.Partnership@fife.gov.uk](mailto:Fife.Partnership@fife.gov.uk)

## Membership

A lead officer for Keeping The Promise in Fife. This is a new post, building on work of the current Promise Group and will strengthen strategic leadership for the Promise, as well as improving coordination with other aspects of children's services planning and delivery, including GIRFEC and the work of the Corporate Parenting Board.

Leaders from each of the key strategic groups, overseeing delivery of the improvement priorities for the Children's Services Plan.

Representation from the Corporate Parenting Board and Child Protection Committee, to ensure a joined-up approach to planning for children and young people at risk of harm, in need of care, or in need of protection.

Representation from key partnership groups supporting delivery of the plan, including: the Children's Services Data Group.

## Membership

- Fife Council (Education Service, Children and Families Social Work, Housing, and Communities),
- Fife Health and Social Care Partnership
- Fife Voluntary Sector
- Fife College
- Police Scotland
- The Scottish Children's Reporter Administration

## Meeting Frequency

- Approximately every 2 months

## Strategy/Plan

- [Children's Services Plan 2023-26](#)

## Plan for Fife Governance Route

- [Fife Leadership Board](#)

## Reporting Requirements

- Reports go to Fife Partnership Board to be signed off to be submitted to the Scottish Government.
- Statutory 3 year plan with annual report on progress. This links to joint strategic assessment.

# Fife Community Safety Partnership

## Overview

The Fife Community Safety Partnership coordinate community safety activity in Fife acting as a conduit between National requirements and implementing this at a local level and at local context. The Partnership raises awareness around community safety issues and the Priority leads co-ordinate delivery of activity that feeds into the Partnership Delivery Plan.

## Contact

- [Fife.Partnership@fife.gov.uk](mailto:Fife.Partnership@fife.gov.uk)

## Membership

- Fife Council Councillors (Chair and Depute Chair)
- Police Scotland (Fife Division)
- Scottish Fire and Rescue Service
- Housing and Safer Communities
- Education Service
- Justice Social Work
- Social Work Service
- Fife Centre for Equalities
- Fife Violence Against Women Partnership
- Protective Services
- Community Planning
- Alcohol & Drugs Partnership
- Health & Social Care Partnership
- Public Health Scotland
- Victim Support
- SACRO

## Meeting Frequency

- Quarterly

## Current Strategy/Plan

- Live delivery plan with vision which is ongoing and refreshed annually.

## Plan for Fife Governance Route

- [Fife Leadership Board](#)

## Reporting Requirements

- Annual report to People & Communities Scrutiny

## Additional Information

Working groups have been established to bring in a wider variety of partners and to focus on specific areas. For example, Water Safety, Road Safety, Home Safety – these groups carry out activity to support the outcomes in the Delivery Plan.

Groups/Network that feed into FSCP:

- Community Justice (it is important to note Community Justice activity is a statutory requirement)
- Priority Leads Group
- Themed Working Groups

# Fife Housing Partnership

## Overview

The Fife Housing Partnership has been established to provide a single forum for everyone to get involved in the planning and development of housing processes, to meet housing needs in Fife. This includes:

- Investors
- Planning agencies
- Housing providers
- Tenants
- Voluntary Organisations

The Partnership operates within the Community Planning Framework and looks to improve housing and housing services across all areas.

The objectives of the Fife Housing Partnership are to:

- Develop, implement and review the Local Housing Strategy for Fife on behalf of Fife Council, taking account of national, regional and local housing priorities,
- Review progress of housing activity against the objectives in the Plan for Fife, the Fife Community Plan,
- Maintain appropriate links to, and involvement in, the activities of strategic partnerships in Fife,
- Maximise stakeholder participation in the development of housing policy,
- Comment on statutory plans, the national strategy / policy framework and current housing issues, and provide views giving a Fife perspective to outside bodies,
- Promote and develop the work of housing interest groups / forums active in Fife.

## Contact

- [LHS.Enquiries@fife.gov.uk](mailto:LHS.Enquiries@fife.gov.uk)

## Membership

- Fife Council
- NHS Fife
- Fife Health & Social Care Partnership
- Scottish Government
- Fife Housing Association Alliance
- Fife Tenant Forum
- Rural Housing Interest
- Private Rented Sector
- Voluntary Sector

## Meeting Frequency

- Quarterly

## Current Strategy/Plan

- [Local Housing Strategy 2022-2027 \(Update 2025\)](#)

## Plan for Fife Governance Route

- [Fife Leadership Board](#)

## Reporting Requirements

- [Annual Update 2023](#)
- [Annual Update 2024](#)

## Additional Information

The Local Housing Strategy Implementation and Performance Group ensures commitments of the Local Housing Strategy are delivered by the Fife Housing Partnership.

# KnowFife Network

## Overview

The overall aim of the KnowFife Network is to support effective use of research and evidence across partner agencies in Fife.

The KnowFife Network:

- Facilitates joint working with a wide range of community planning partners to coordinate, conduct and share research of direct relevance to policy and practice to provide good quality insight to inform planning and delivery of services in Fife.
- Maintains the KnowFife Hub: <https://knowfife.scot> as an online resource for community planning partners and the public in Fife. This includes Community Profiles and Research reports by Theme.
- Signposts to relevant local and national research and information resources via <https://knowfife.scot>

## Contact

- [Research.Enquiries@fife.gov.uk](mailto:Research.Enquiries@fife.gov.uk)

## Plan for Fife Governance Route

- [Fife Leadership Board](#)

# Plan for Fife Partnership Directory

If you would like any further information about this plan or the work of the Fife Partnership please visit the Fife Council Community Portal at [our.fife.scot](http://our.fife.scot) or email: [fife.partnership@fife.gov.uk](mailto:fife.partnership@fife.gov.uk)



## Alternative Formats

Information about Fife Council can be made available in large print, braille, audio CD/tape and Gaelic on request by calling **03451 55 55 00**



## British Sign Language

Text (SMS) 07781 480 185



via **contactSCOTLAND-BSL**  
[contactscotland-bsl.org](http://contactscotland-bsl.org)



## People with a hearing loss:

SMS 07781 480 185



## BT Text Direct:

18001 01592 55 11 91

## Language lines

---

خط هاتف اللغة العربية:  
03451 55 55 77

---

বাংলায় আলাপ করার জন্য টেলিফোন লাইন:  
03451 55 55 99

---

中文語言熱線電話:  
03451 55 55 88

---

Polskojęzyczna linia telefoniczna:  
03451 55 55 44

---

اردو زبان کے لیے ٹیلیفون نمبر  
03451 55 55 66

---

**OurFife**  
successful · confident · fairer